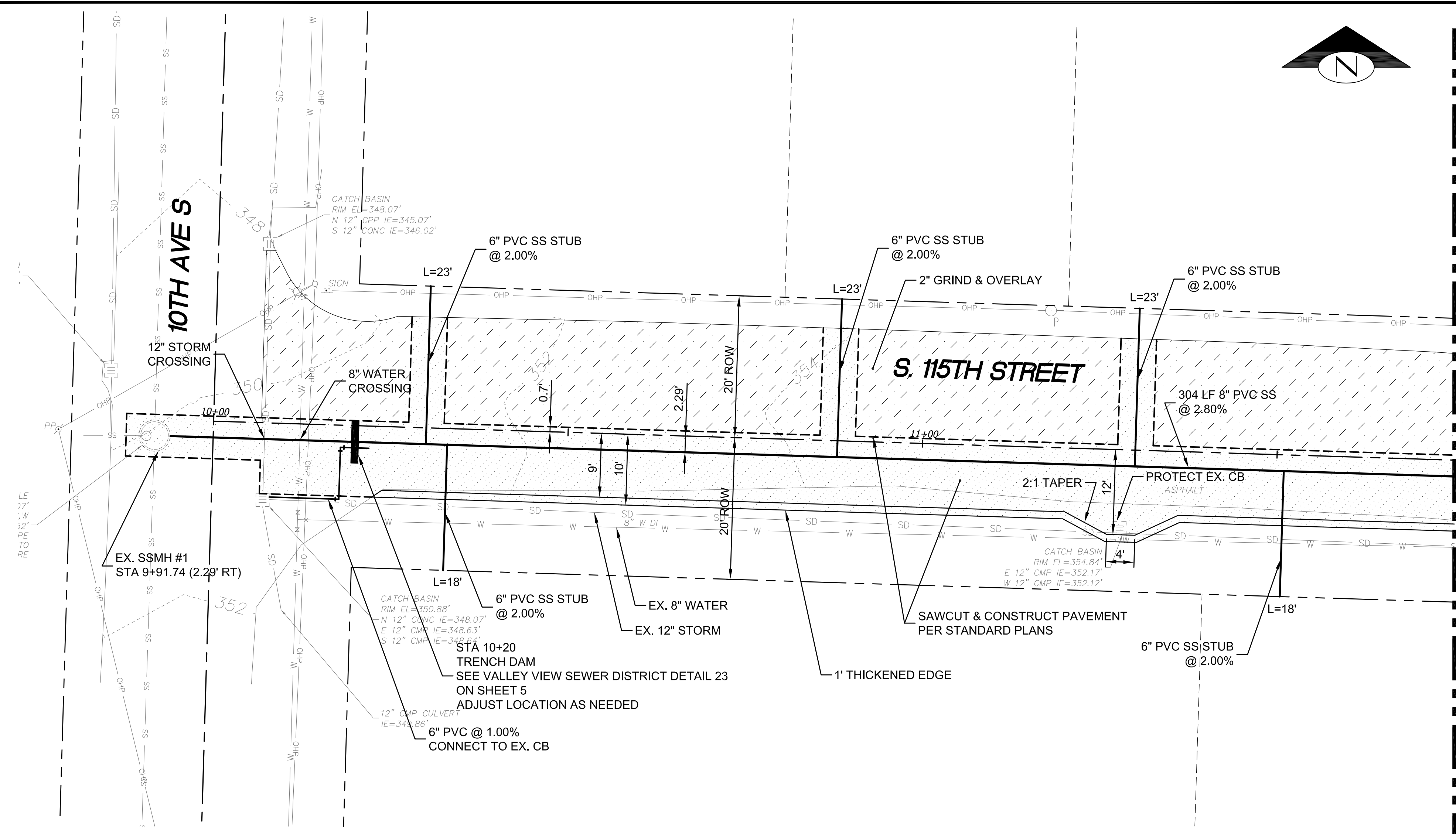


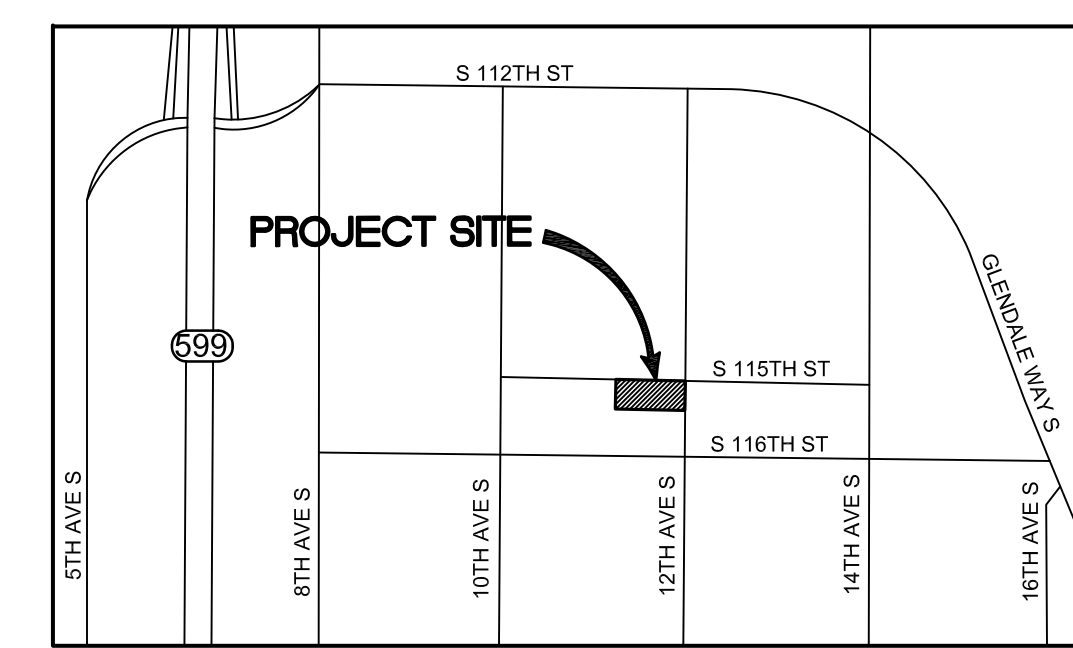
Nov 15, 2022 - 1:32pm Hon Phan L: Working R22240 - 10XX S 115th Street (Callidus Homes)\CADD\Drawings\R22240-PS-SS1.dwg Layout Name: Layout1



# SEWER MAIN EXTENSION

10XX S. 115TH STREET  
BURIEN, WA 98168

NW 1/4 OF NE 1/4, SEC. 8-TWP23N-R4E, W.M.



VICINITY MAP  
NTS

### HORIZONTAL DATUM

NAD 1983 (2011) NORTH ZONE; PER RTK GPS TIES AND THE WASHINGTON STATE REFERENCE NETWORK (WSRN). UNITS OF MEASUREMENT ARE U.S. SURVEY FEET

### VERTICAL DATUM

NAVD 88 PER RTK GPS TIES AND THE WASHINGTON STATE REFERENCE NETWORK (WSRN). UNITS OF MEASUREMENT ARE U.S. SURVEY FEET.

### TAX PARCEL NUMBERS

3361400690, 3361400691, 3361400692, 3361400693, 3361400694, 3361400695, 3361400700 & 3361400701

### CONTACTS

<b>OWNER:</b> SAPPHIRE HOMES, INC. 16805 SE 43RD COURT BELLEVUE, WA 98006 (206) 954-4945 CONTACT: TROY SCHMEIL	<b>CIVIL ENGINEER:</b> PBG, LLC 5130 S. 166TH LANES SEATAC, WA 98188 (206) 229-6422 CONTACT: HAN PHAN, P.E.	<b>SURVEYOR:</b> INFORMED LAND SURVEY PO BOX 5137 TACOMA, WA 98415-0137 (253) 627-2072 CONTACT: EVAN WAHLSTROM, P.L.S.
---	--	---

### GENERAL NOTES:

- CONTRACTOR SHALL FIELD VERIFY ALL GRADES PRIOR TO CONSTRUCTION.
- SEE SHEET SS4 FOR SEWER STANDARD DETAILS.

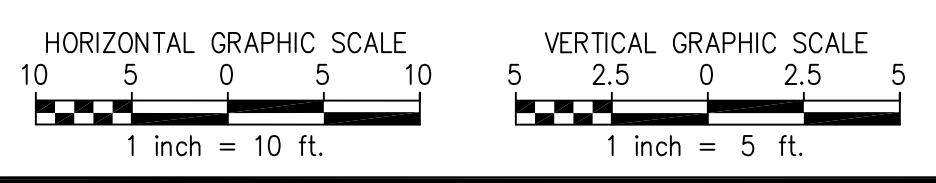
### DRAWING INDEX

REFERENCE SHEET NO.	DRAWING TITLE
SS1	SEWER MAIN EXTENSION PLAN AND PROFILE - 1
SS2	SEWER MAIN EXTENSION PLAN AND PROFILE - 2
SS3	SEWER MAIN EXTENSION PLAN AND PROFILE - 3
SS4	SEWER DETAILS - 1
SS5	SEWER DETAILS - 2

1. 2" FULL WIDTH OF THE STREET GRIND AND OVERLAY SHALL BE REQUIRED ALONG S. 115TH STREET FOR PROPOSED SEWER MAIN EXTENSION FROM 12TH AVE SOUTH TO 10TH AVE SOUTH AND OTHER UTILITIES (WATER AND POWER) IN ACCORDANCE WITH 2016 BURIEN ROAD AND CONSTRUCTION STANDARDS (BRCS, SECTION 4.03). ALL APPROPRIATE REPAIRS TO THE EXISTING SUB-GRADE, BASE MATERIAL, SURFACING AND PRELEVEL MAY BE REQUIRED PRIOR TO PLACING OVERLAY. THIS AREA MAY BE EXPANDED BY RIGHT OF WAY INSPECTOR IF AREA OUTSIDE OF THIS LIMIT ARE DAMAGE DURING CONSTRUCTION PRIOR TO PROJECT COMPLETION.

2. DEVELOPER OR CONTRACTOR SHALL INSTALL ALL PROPOSED UNDERGROUND UTILITIES INCLUDING WATER, POWER AND ANY OTHER UTILITIES PRIOR TO FINAL 2" FULL WIDTH OVERLAY ALONG S. 115TH STREET. AFTER FINAL 2" OVERLAY ALONG S. 115TH STREET, THEN CITY OF BURIEN WILL NOT ALLOW TO OPEN CUT STREET FOR UTILITIES INSTALLATION.

**Approved for construction**  
**Andrew LaRue 12.1.2022**



MATCHLINE - SEE SHEET 2 OF 5

REFERENCE SHEET NO.	SS1	SHEET	1
		OF	5
		SHEETS	
SAPPHIRE HOMES 10XX S. 115TH STREET BURIEN, WA 98168		SEWER MAIN EXTENSION PLAN AND PROFILE - 1	
		ISSUE DATE	10-24-2022
		JOB NO.	R22240
		DESIGNED BY:	L. PHAN
		DRAWN BY:	L. PHAN
		CHECKED BY:	H.H. PHAN
		PROJ. MNGR:	H.H. PHAN
NO.	DATE	REVISION DESCRIPTION	
1	10-24-2022	HPH CITY COMMENT CORRECTION DATED SEPTEMBER 28, 2022 (ROW-22-2719)	

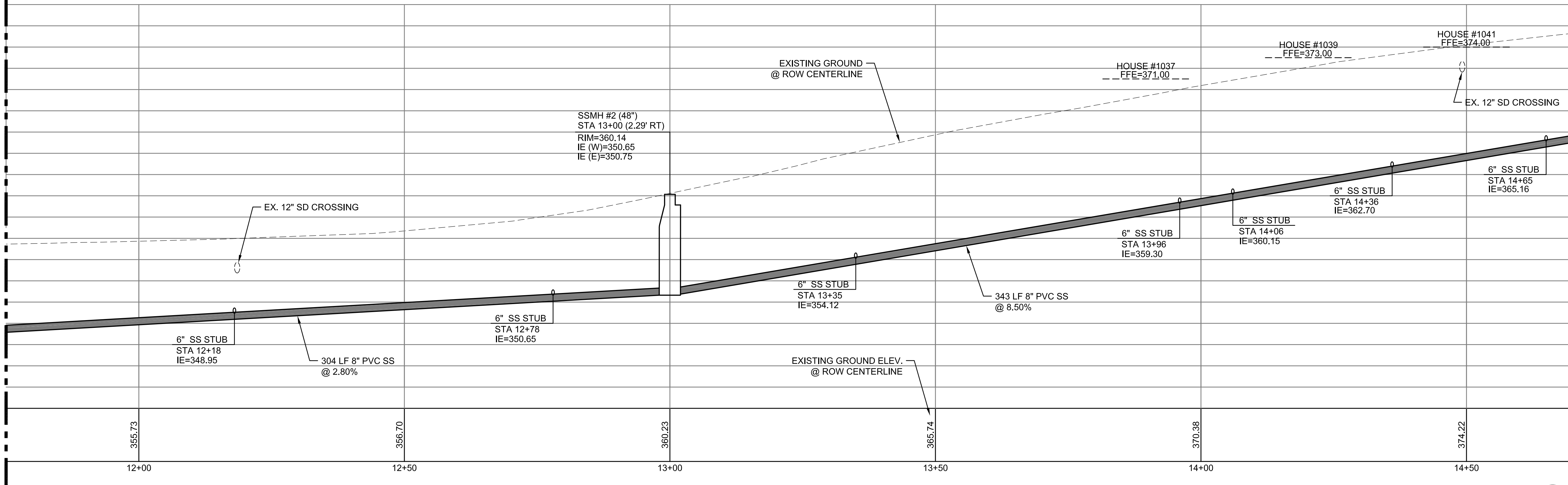
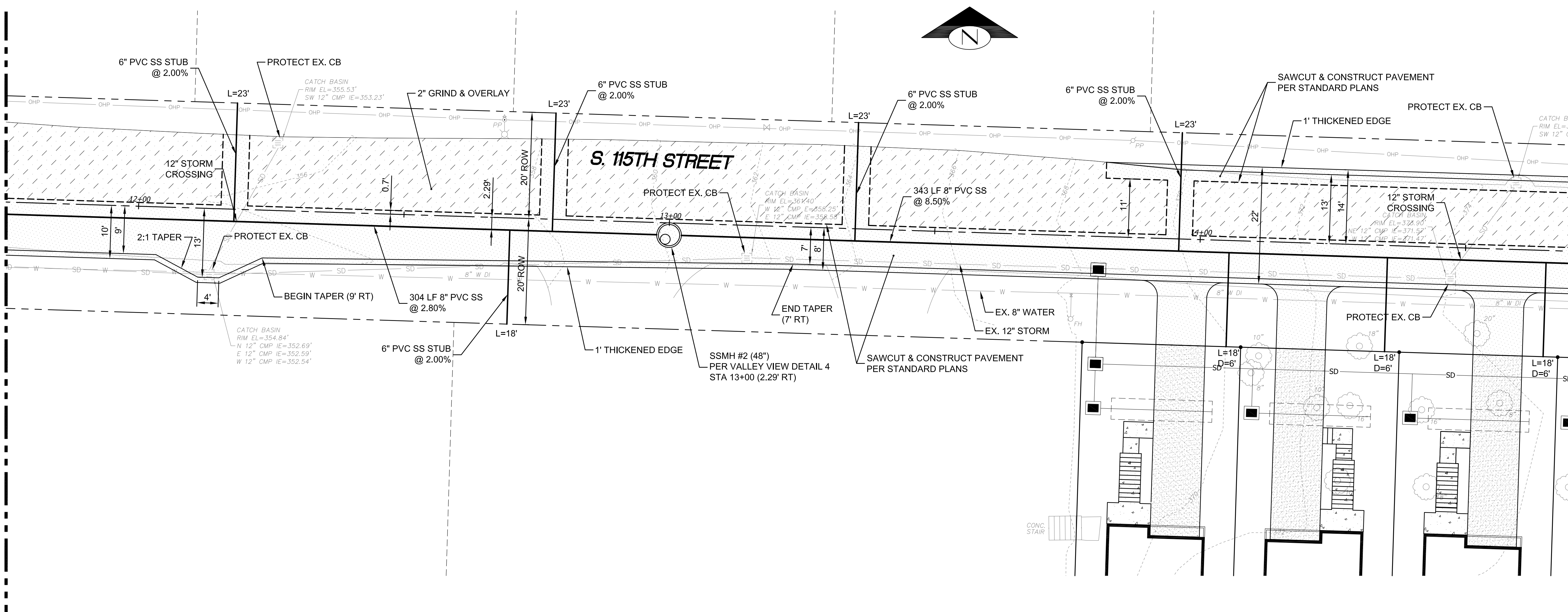
Nov 15, 2022 - 1:37pm Hon Phou L: Working R22240 - 10XX S 115th Street (Collidus Homes)\CADD\Drawings\R22240-PS-SS2.dwg Layout Name: Layout1

MATCHLINE - SEE SHEET 1 OF 5

MATCHLINE - SEE SHEET 1 OF 5

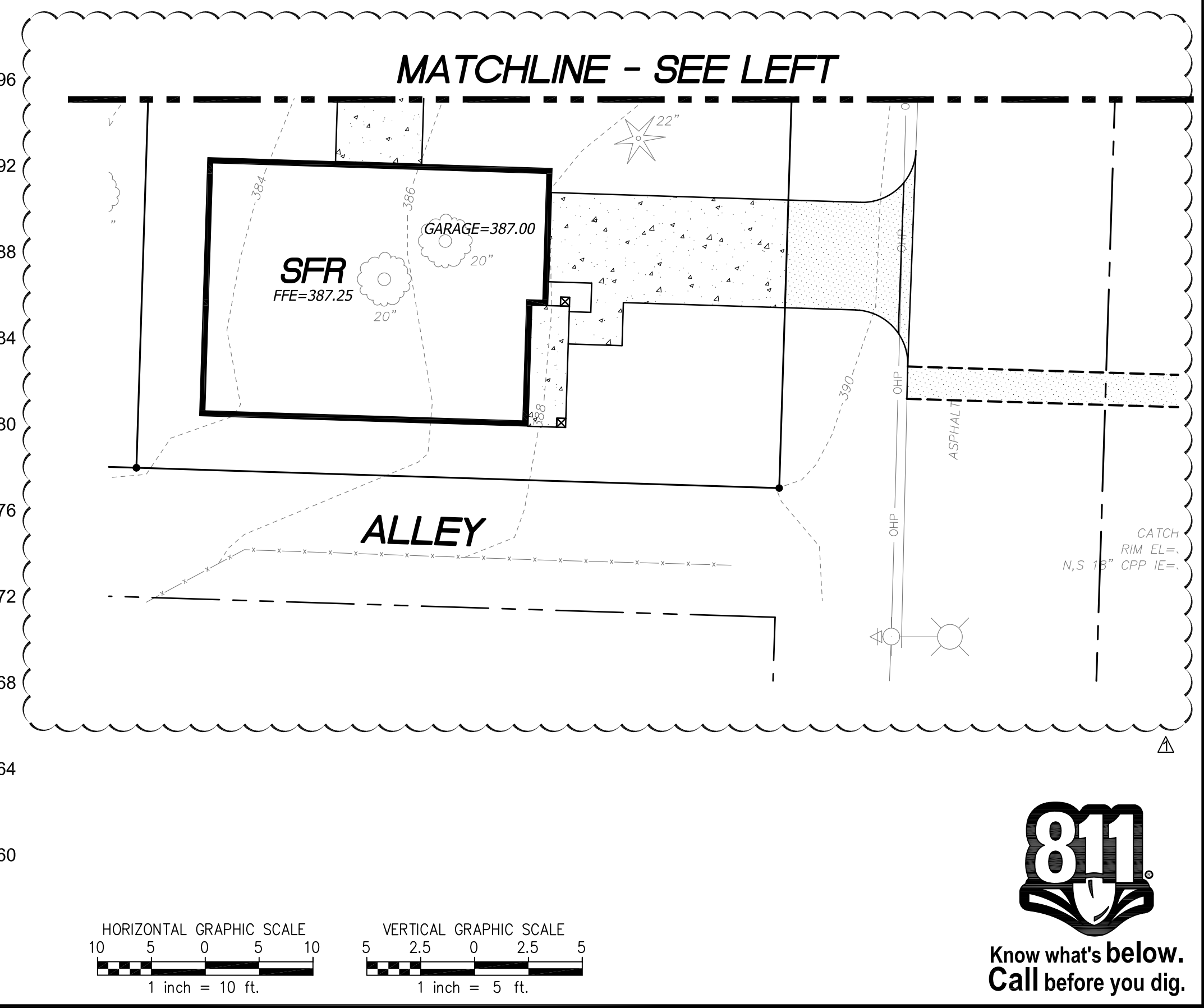
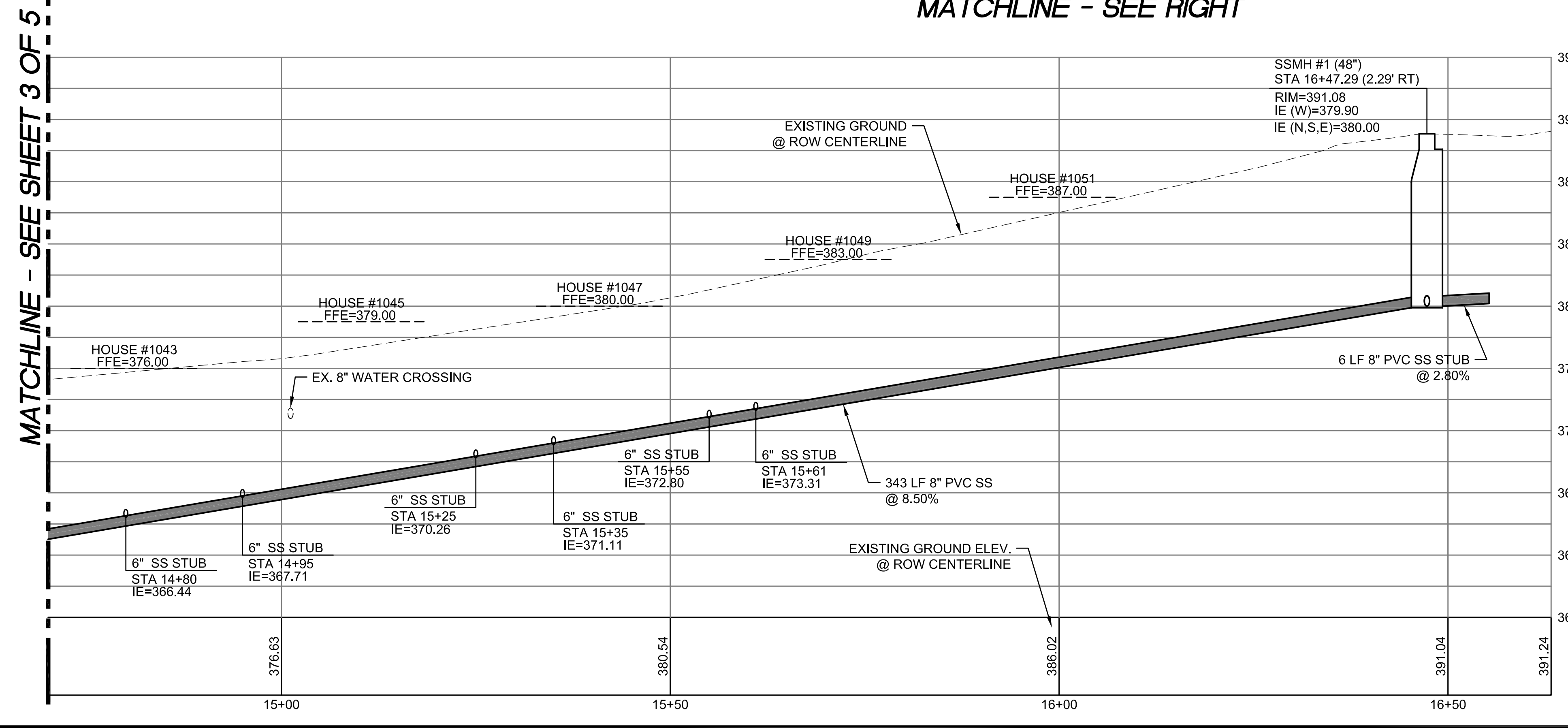
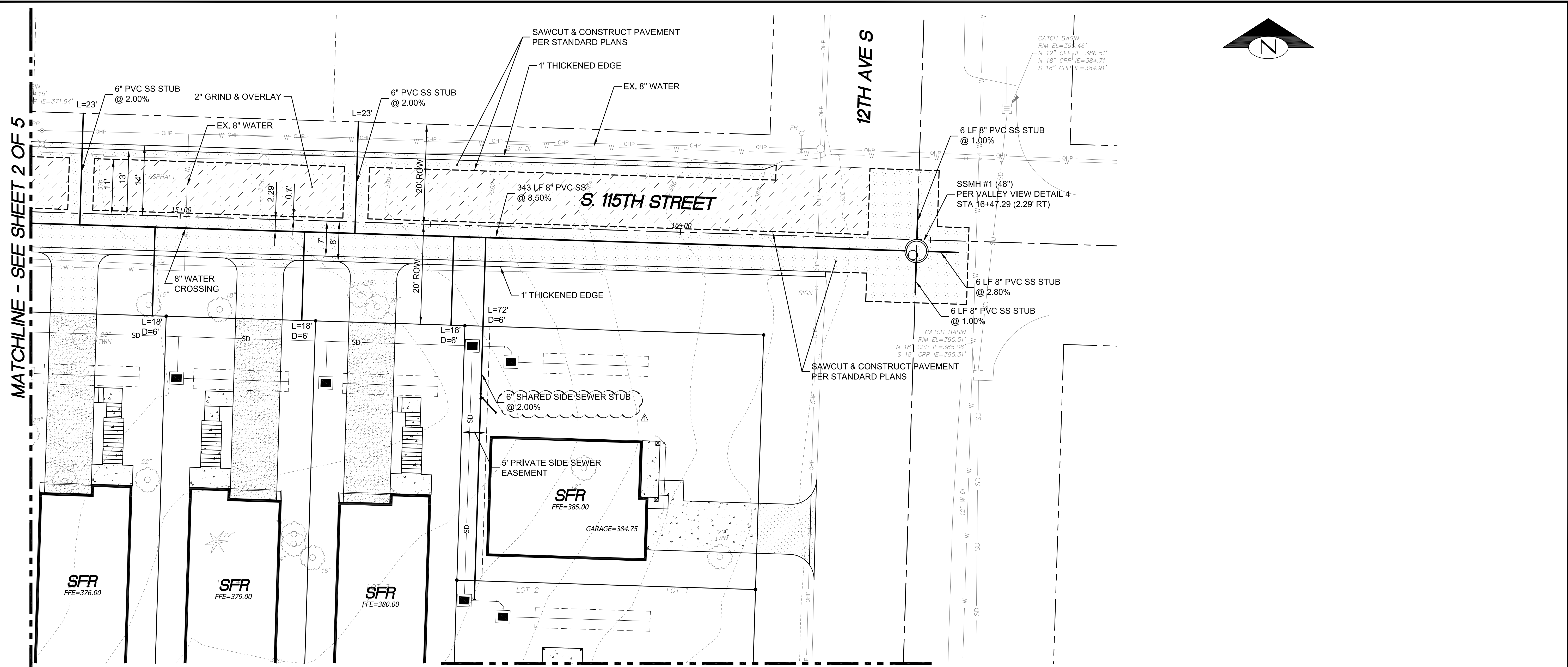
MATCHLINE - SEE SHEET 3 OF 5

MATCHLINE - SEE SHEET 3 OF 5



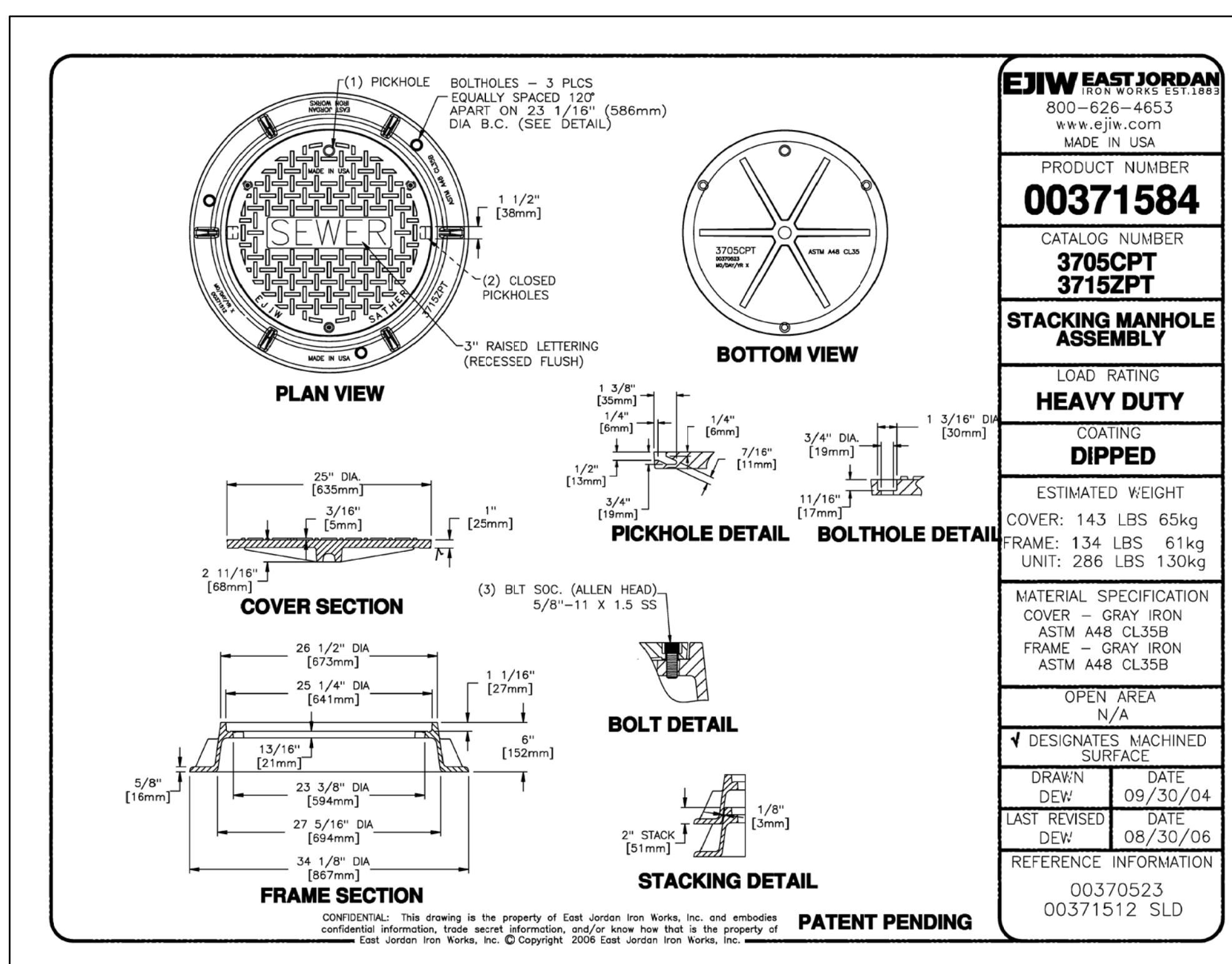
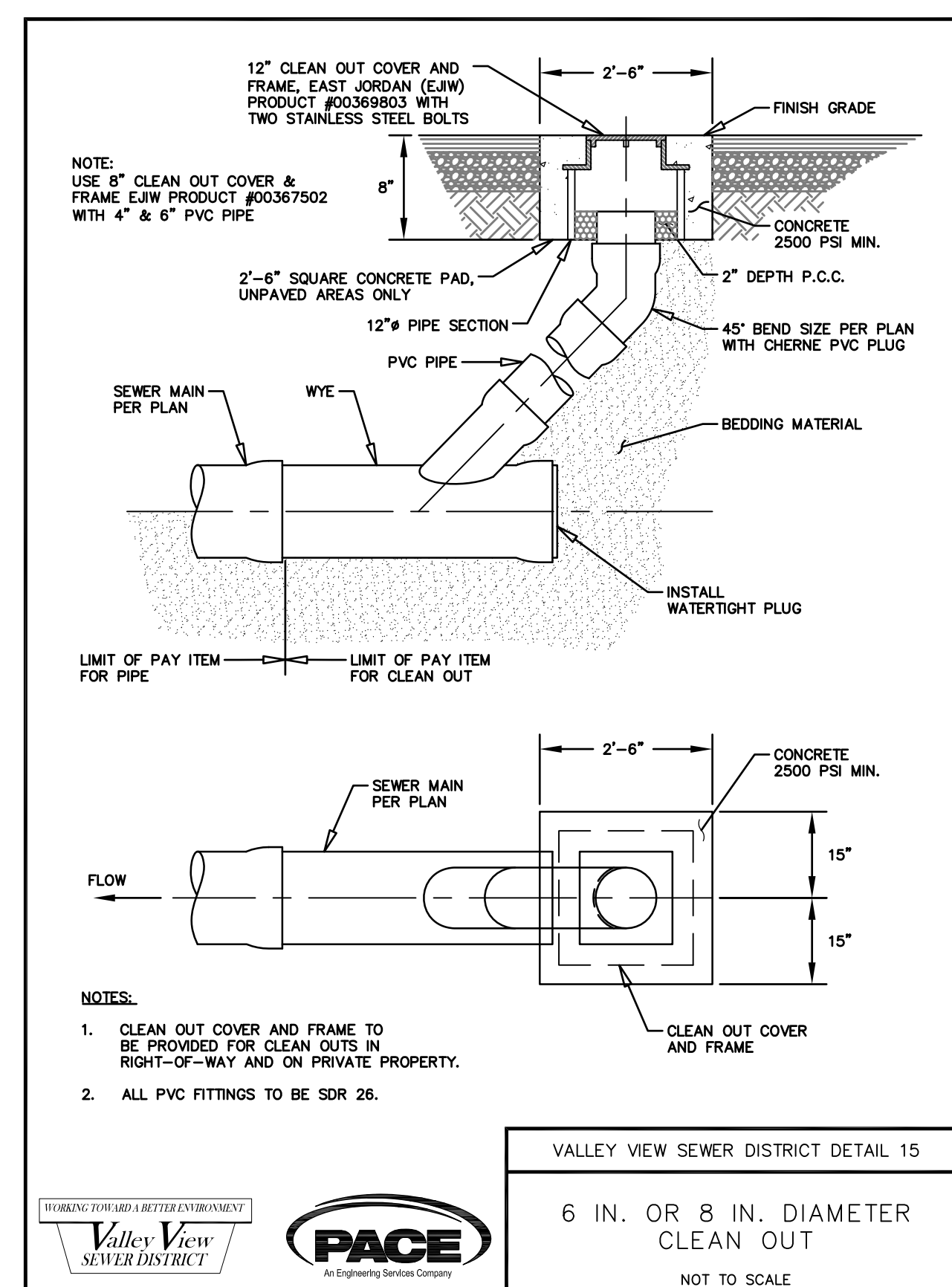
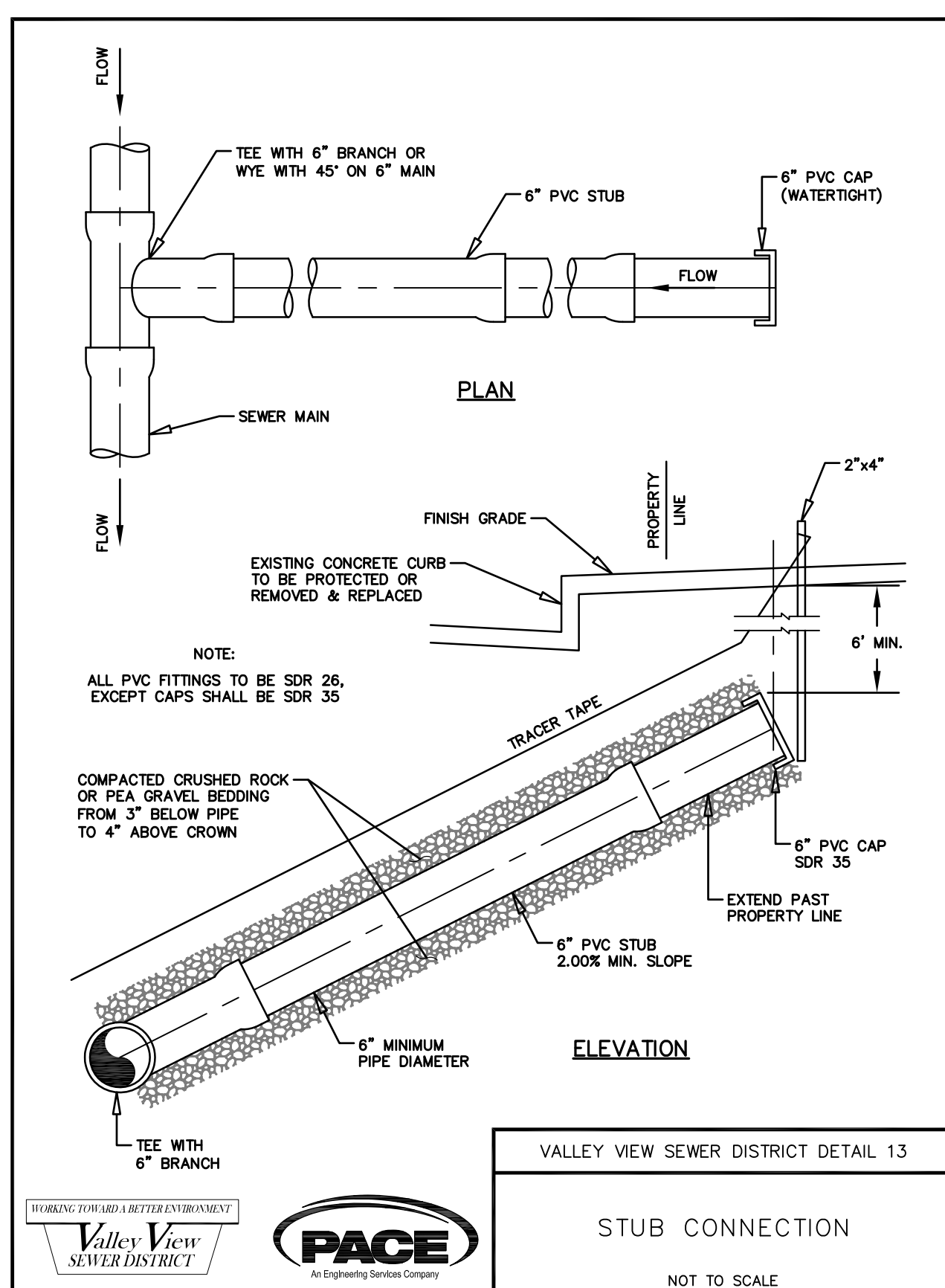
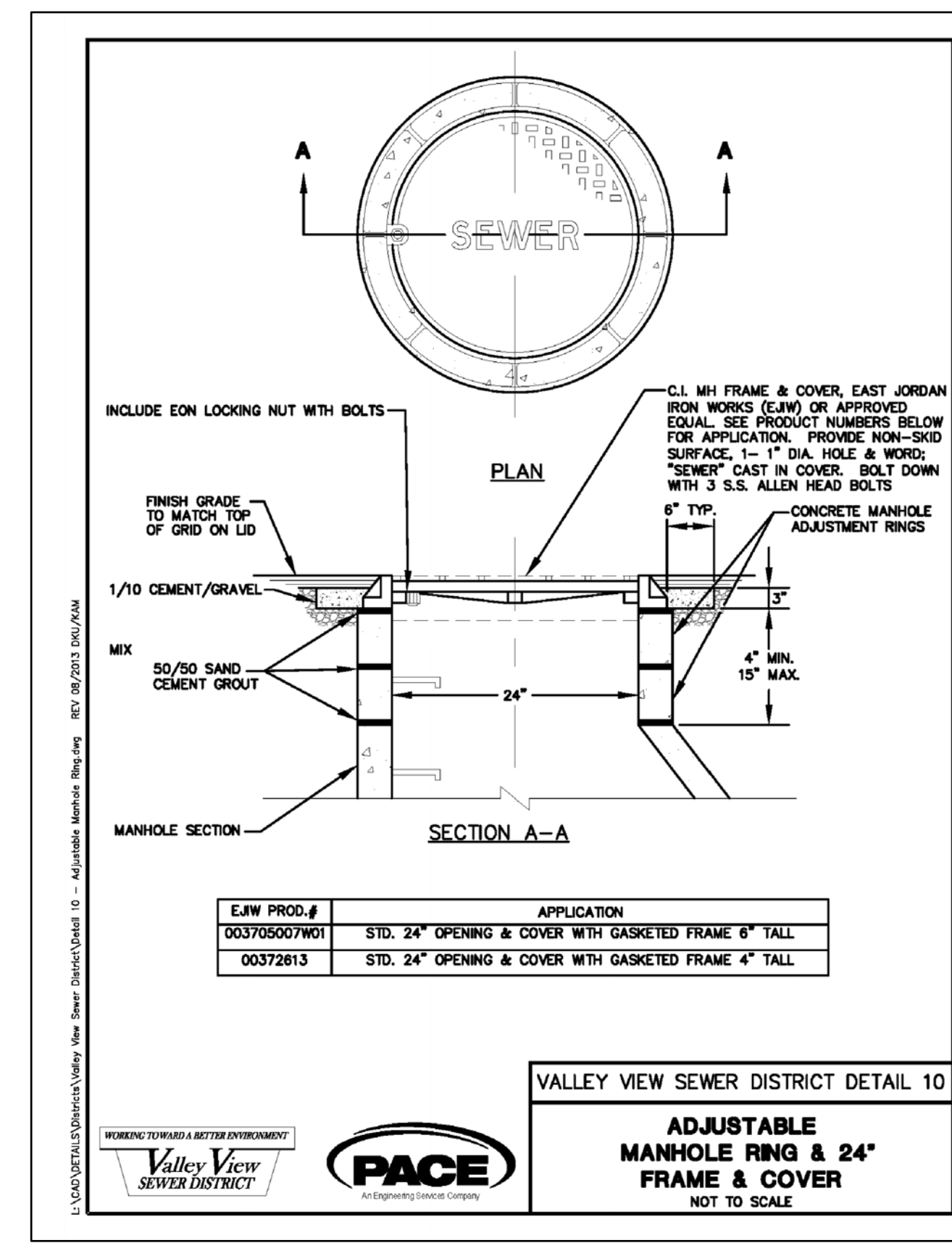
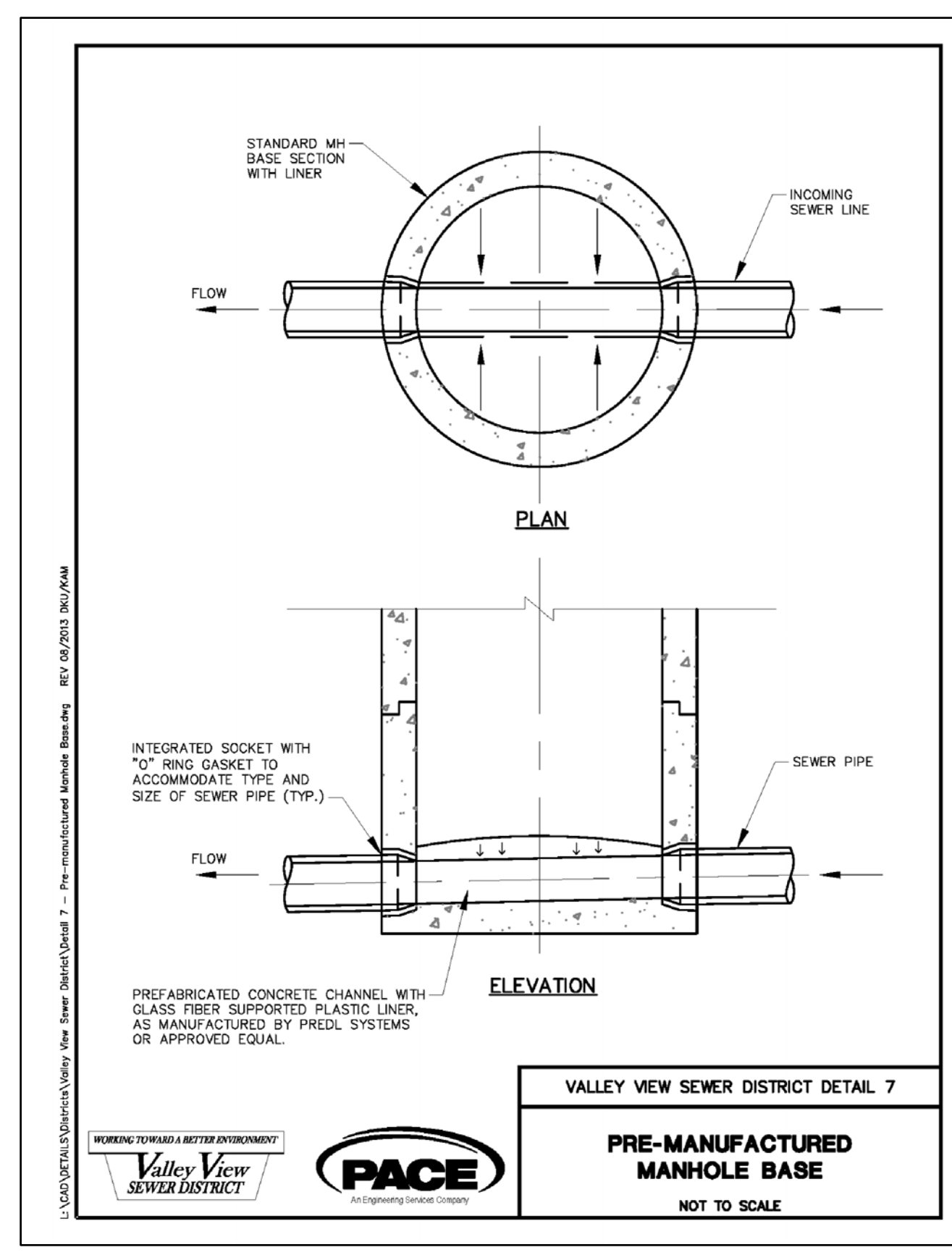
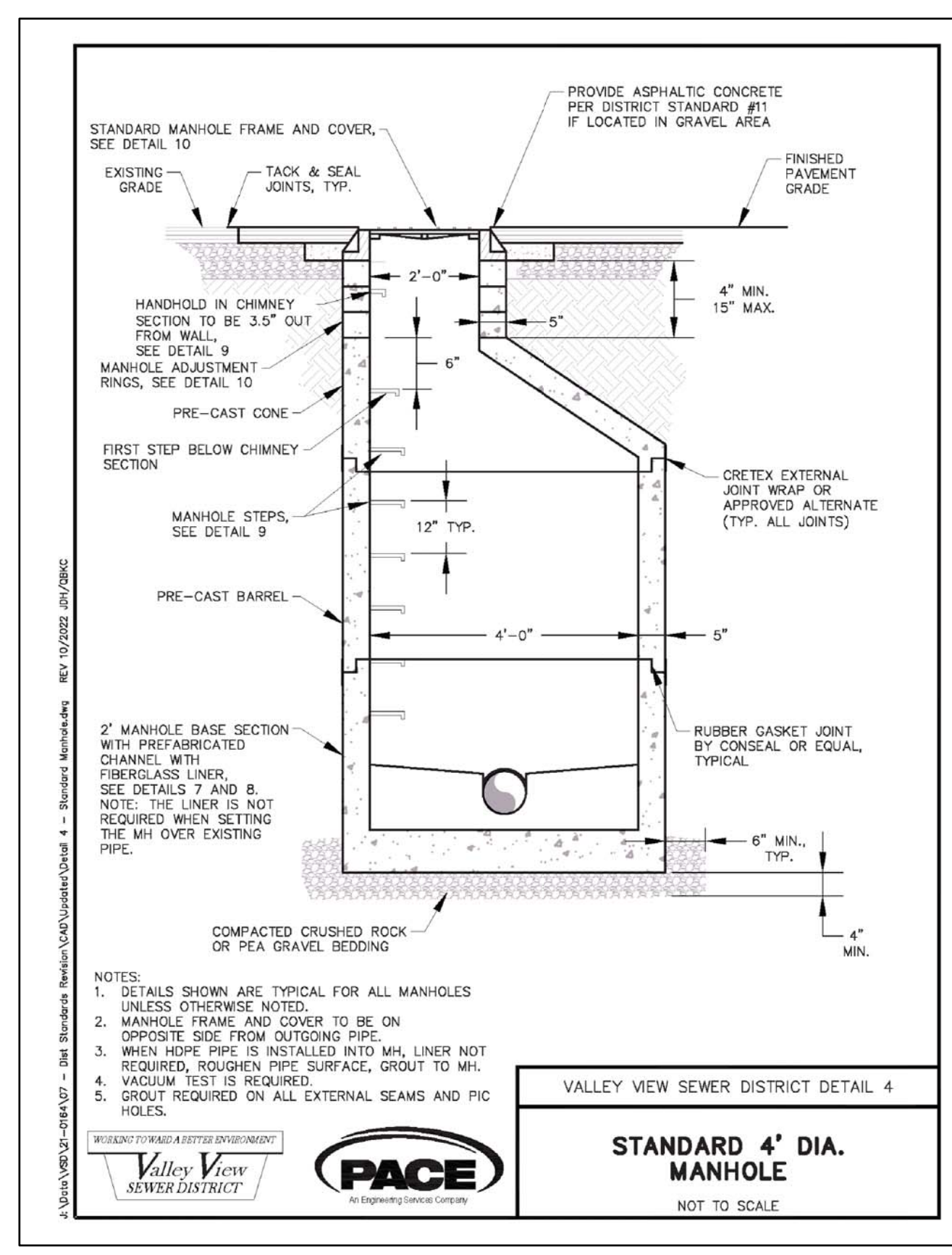
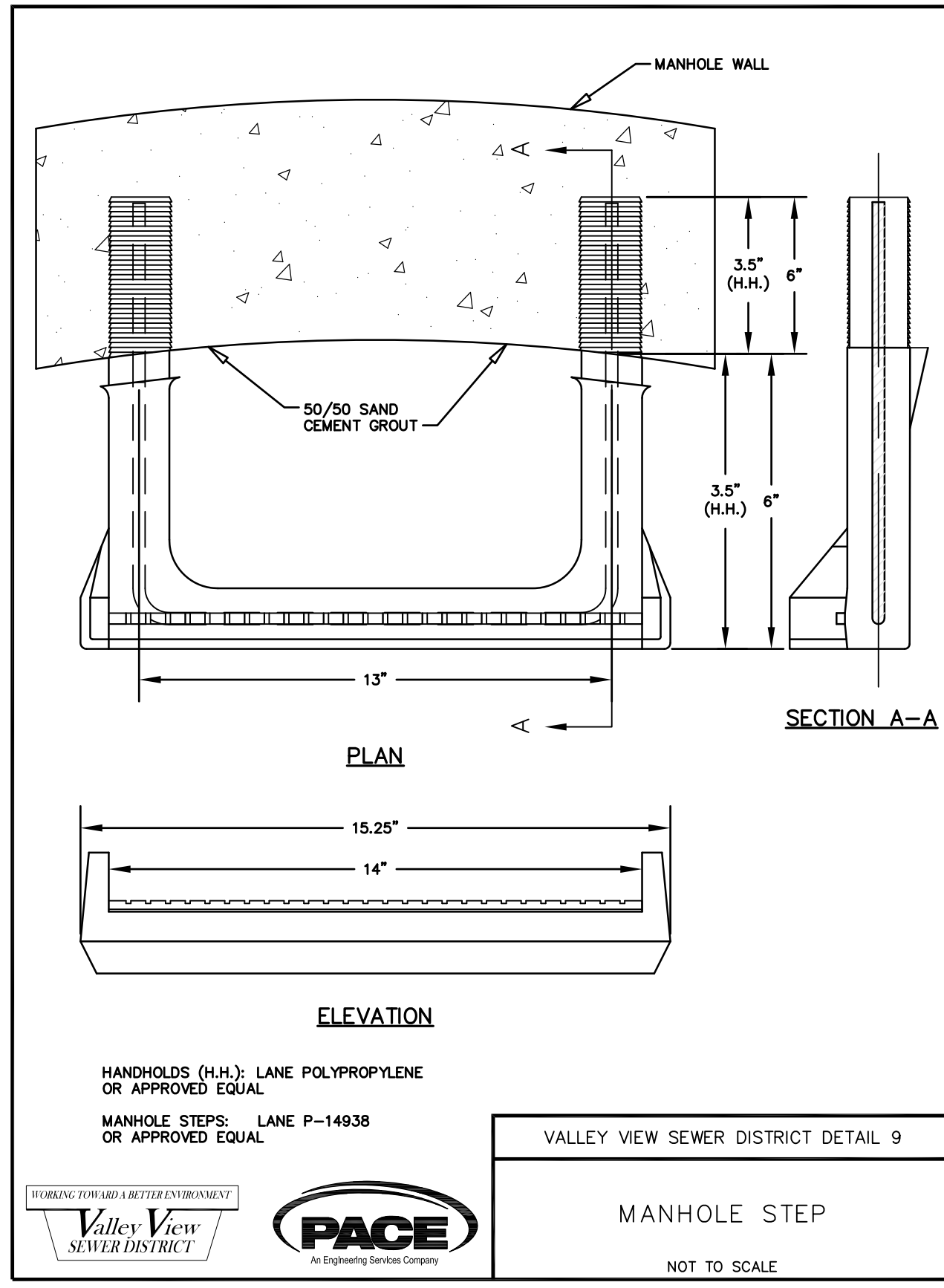
REFERENCE SHEET NO.	SS2	SHEET	2
		OF	5
		SHEETS	
SAPPHIRE HOMES 10XX S. 115TH STREET BURIEN, WA 98168			
<b>SEWER MAIN EXTENSION PLAN AND PROFILE - 2</b>			
ISSUE DATE	10-24-2022	JOB NO.	R22240
DESIGNED BY:	L. PHAN	DRAWN BY:	L. PHAN
CHECKED BY:	H.H. PHAN	PROJ. MNGR:	H.H. PHAN
NO.	DATE	BY	REVISION DESCRIPTION

Nov 15, 2022 - 1:40pm Hon Phou L: Working R22240 - 10XX S 115th Street (Callidus Homes) \CADD\Drawings\R22240-PS-S53.dwg Layout Name: Layout1



REFERENCE SHEET NO.	SS3	SHEET	3
		OF	5
		SHEETS	
<b>SAPPHIRE HOMES</b> 10XX S. 115TH STREET BURIEN, WA 98168			
<b>SEWER MAIN EXTENSION</b> <b>PLAN AND PROFILE - 2</b>			
ISSUE DATE	10-24-2022	DESIGNED BY:	L. PHAN
JOB NO.	R22240	DRAWN BY:	L. PHAN
		CHECKED BY:	H.H. PHAN
		PROJ. MGR:	H.H. PHAN
NO.	DATE	BY	
1	10-24-2022	HPH	CITY COMMENT CORRECTION DATED SEPTEMBER 28, 2022 (ROW=25-2719)

Oct 24, 2022 - 11:36am Hon Pham L:\Working\R22240 - 10XX S 115th Street (Callidus Homes)\CADD\Drawings\R22240-PS-SS4.dwg Layout Name: Layout1

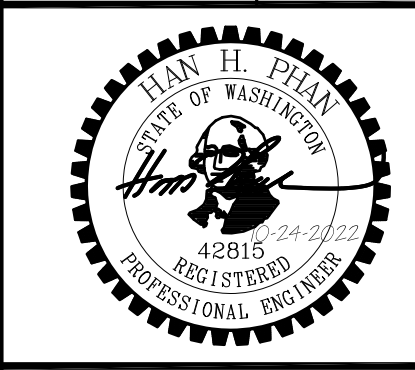


<b>EJW EAST JORDAN</b> IRON WORKS EST. 1883 800-626-4653 www.ejw.com MADE IN USA	
PRODUCT NUMBER	<b>00371584</b>
CATALOG NUMBER	<b>3705CPT 3715ZPT</b>
<b>STACKING MANHOLE ASSEMBLY</b>	
LOAD RATING	<b>HEAVY DUTY</b>
COATING	<b>DIPPED</b>
ESTIMATED WEIGHT	COVER: 143 LBS 65kg FRAME: 134 LBS 61kg UNIT: 286 LBS 130kg
MATERIAL SPECIFICATION	COVER - GRAY IRON ASTM A48 CL35B FRAME - GRAY IRON ASTM A48 CL35B
OPEN AREA	N/A
DESIGNATES MACHINED SURFACE	
DRAWN DATE	09/30/04
LAST REVISED DATE	08/30/06
REFERENCE INFORMATION	00370523 00371512 SLD

REFERENCE SHEET NO.	SS4	SHEET	4
		OF	5
		SHEETS	
SAPPHIRE HOMES 10XX S. 115TH STREET BURIEN, WA 98168		<b>SEWER DETAILS - 1</b>	
ISSUE DATE	10-24-2022	JOB NO.	R22240
DESIGNED BY:	L. PHAN	REVISION DESCRIPTION	
DRAWN BY:	L. PHAN	NO.	
CHECKED BY:	H.H. PHAN	DATE	
PROJ. MNGR:	H.H. PHAN	BY	

SAPPHIRE HOMES  
10XX S. 115TH STREET  
BURIEN, WA 98168

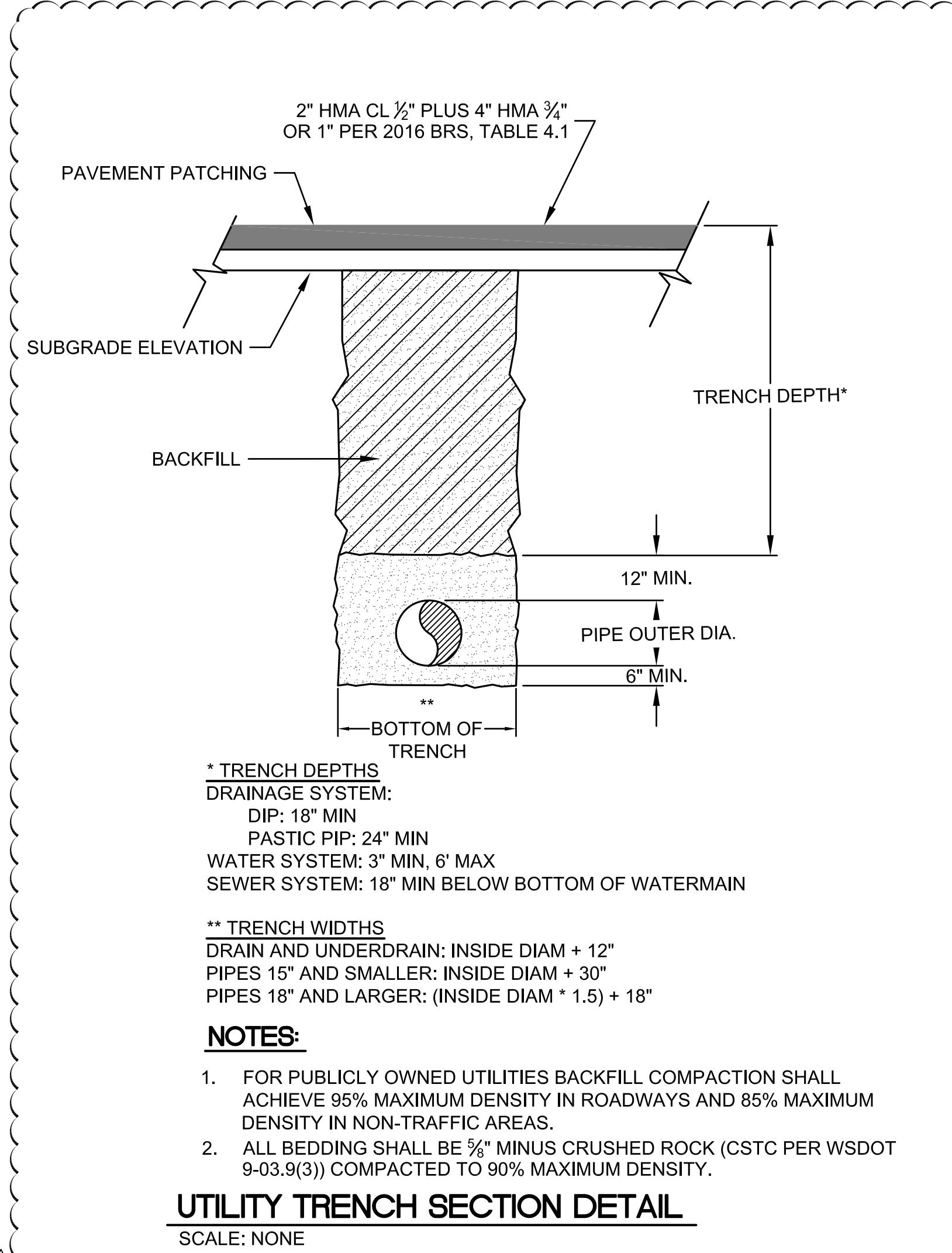
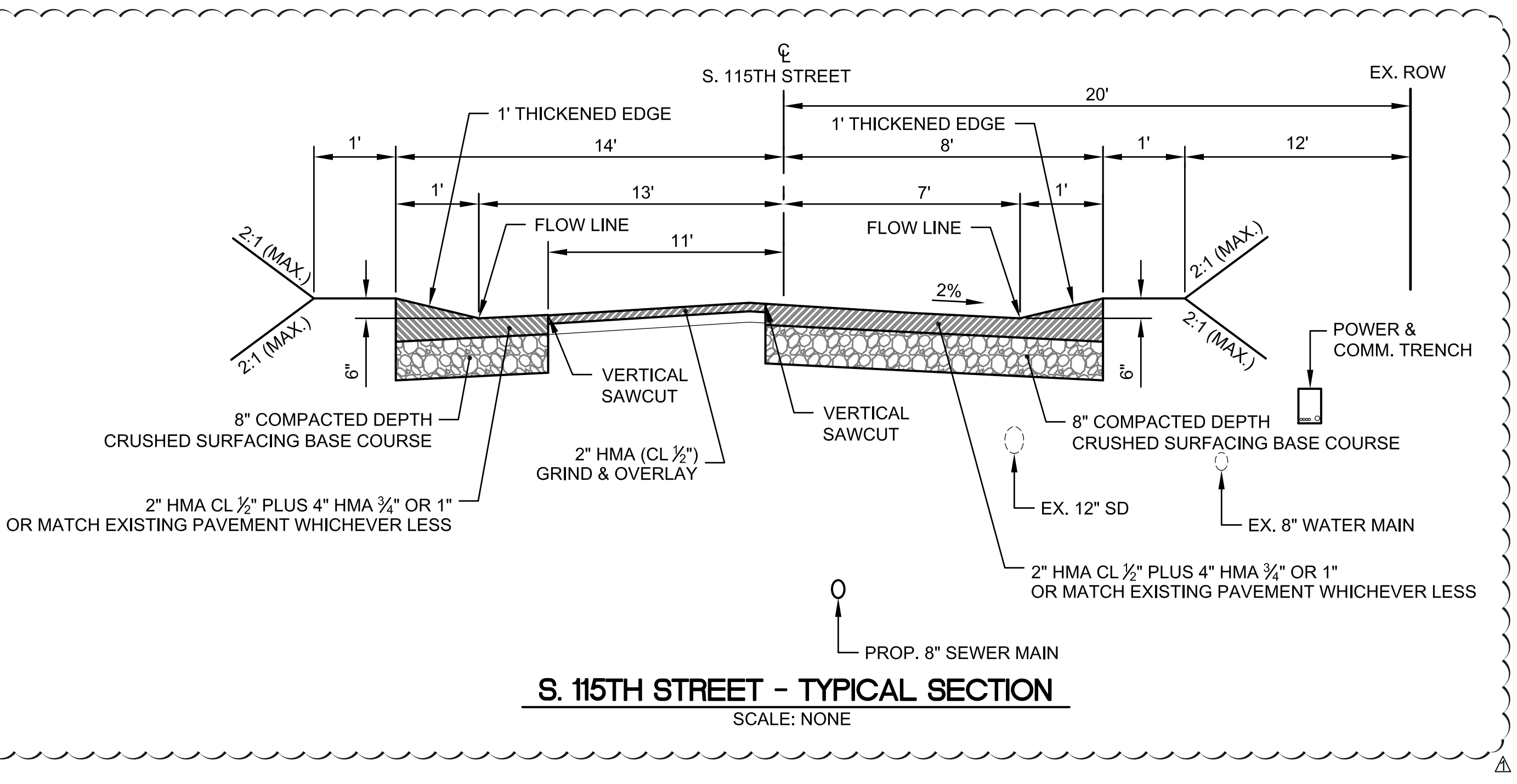
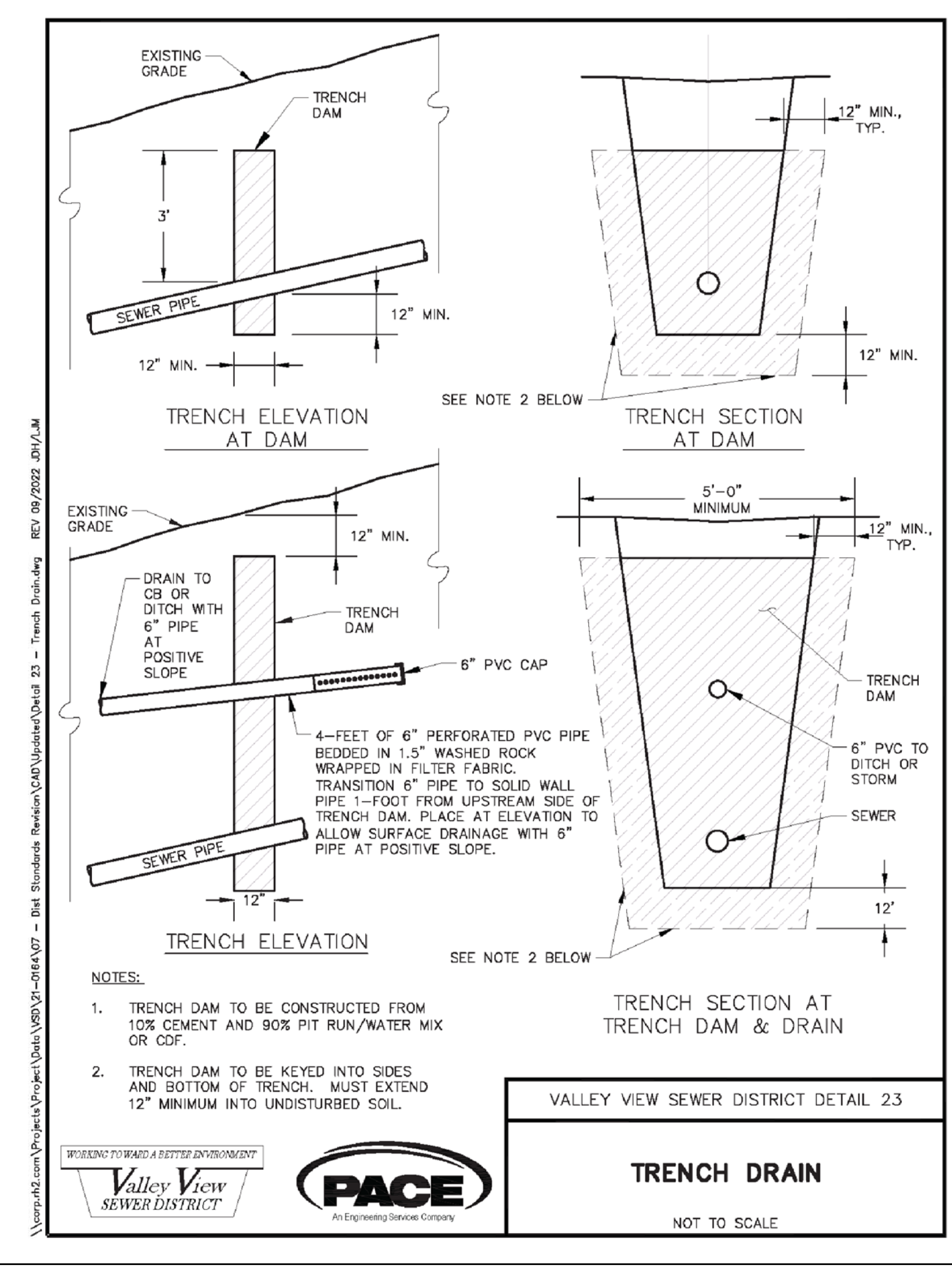
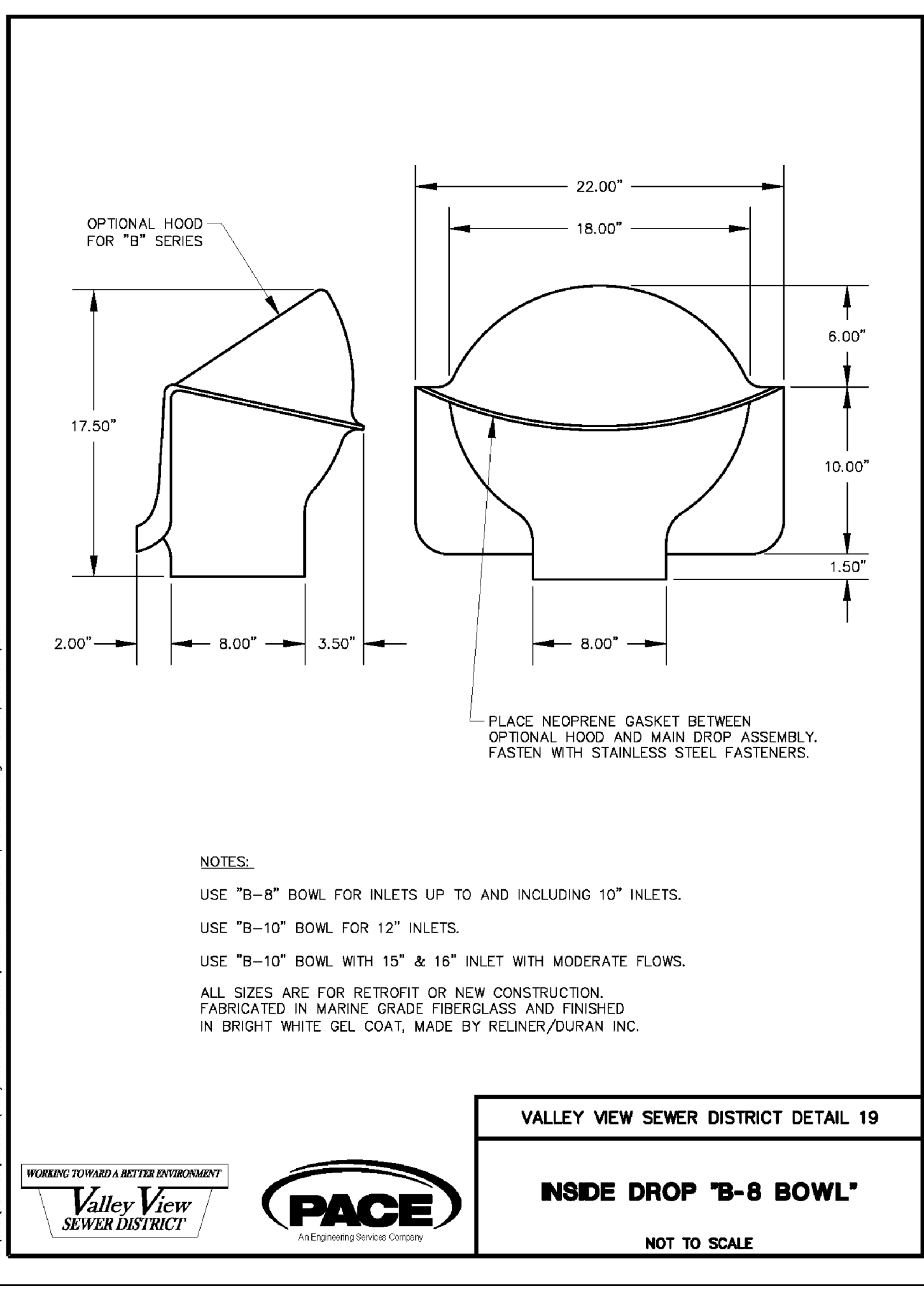
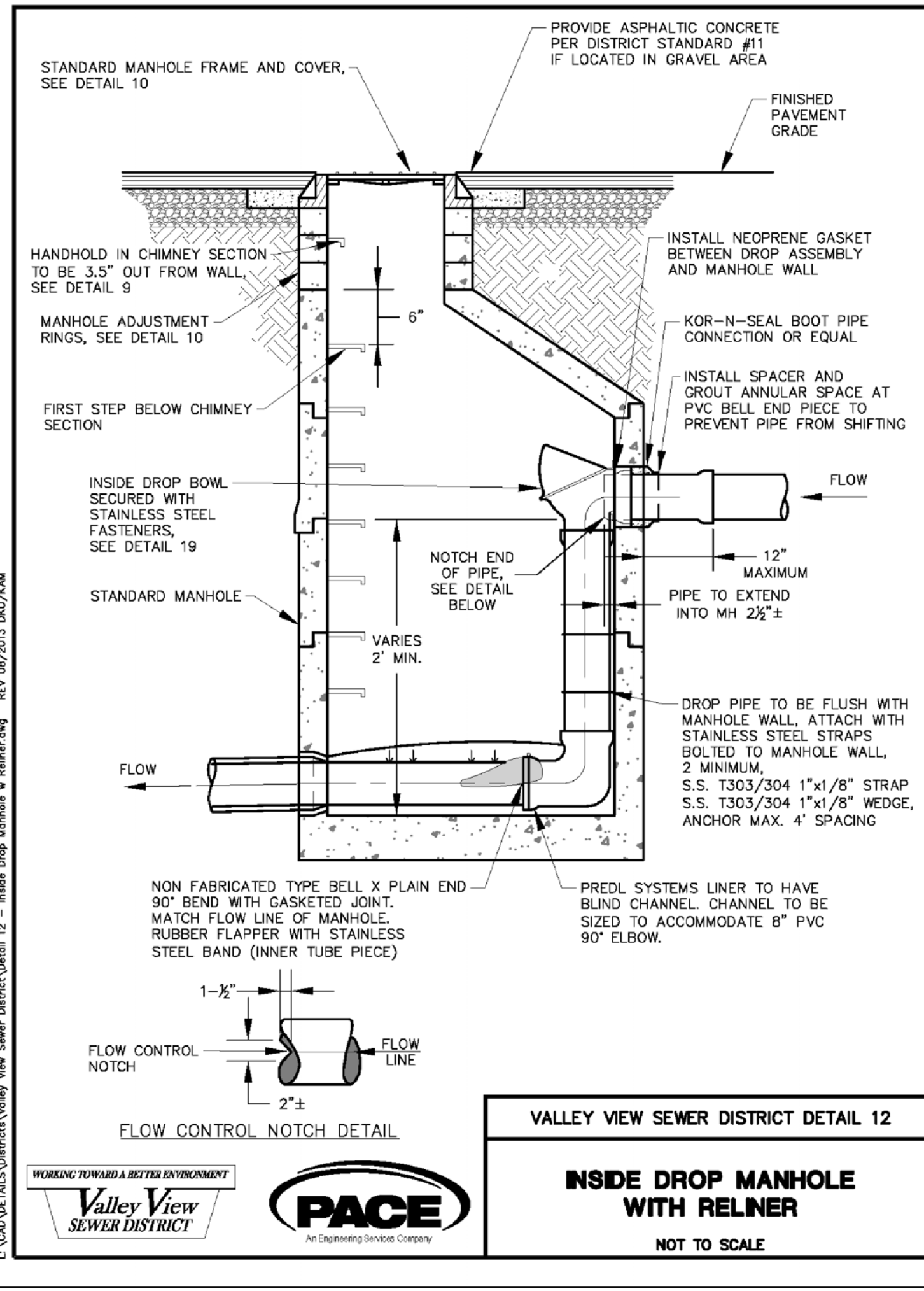
SEWER DETAILS - 2



**PBC**  
Land Development and Civil Engineering Consultants  
5130 South 166th Lane  
Seattle, WA 98188  
T (206) 229-6422

NO.	DATE	REVISION DESCRIPTION
1	10-24-2022	CITY COMMENT CORRECTION DATED SEPTEMBER 29, 2022 (ROW-25-2719)

JOB NO.	ISSUE DATE
R22240	10-24-2022
DESIGNED BY:	PROJECT MGR:
L. PHAN	H.H. PHAN
DRAWN BY:	CHECKED BY:
L. PHAN	H.H. PHAN



Oct 24, 2022 - 11:56am Hon Phn L:\Working\R22240 - 10XX S 115th Street (Callidus Homes)\CADD Drawings\R22240-PS-555.dwg Layout Name: Layout1