

"WORKING TOWARD A BETTER ENVIRONMENT"

Valley View
SEWER DISTRICT

**Valley View Sewer District
General Sewer Plan Update**

**Appendix B
Model Results**

THIS PAGE IS INTENTIONALLY LEFT BLANK.

Peak 2040 InfoSWMM Model Analysis Results

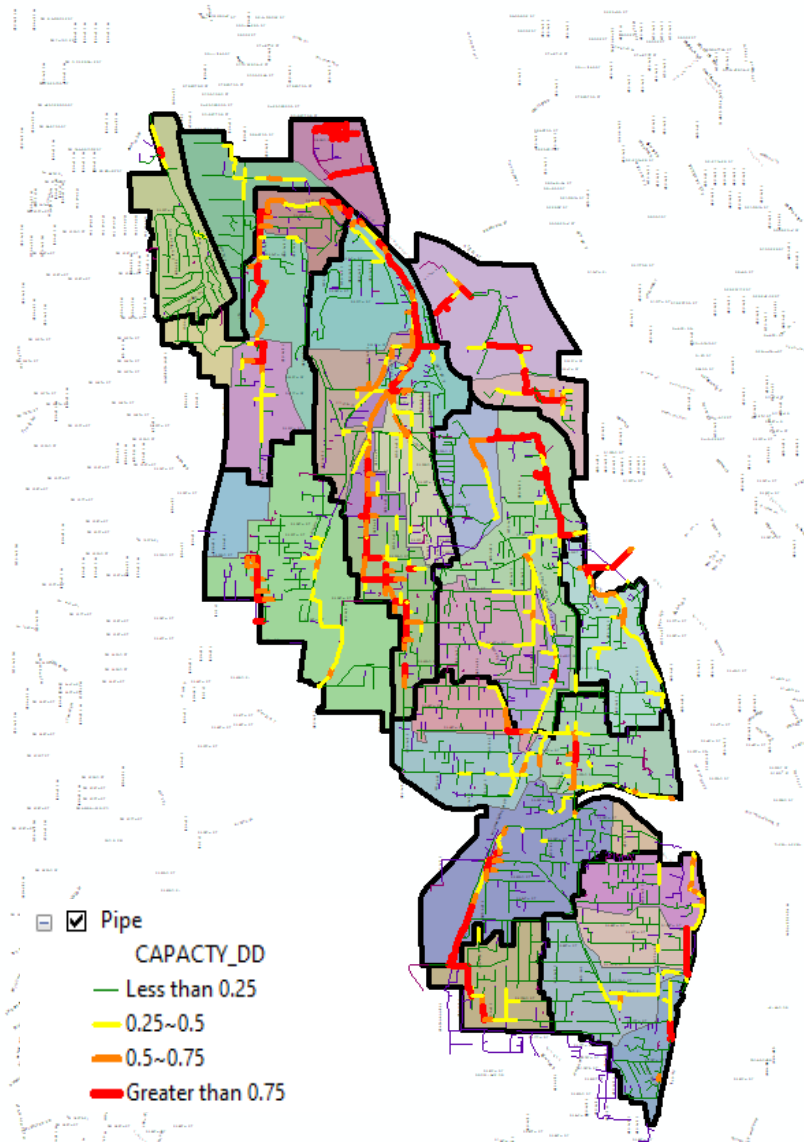
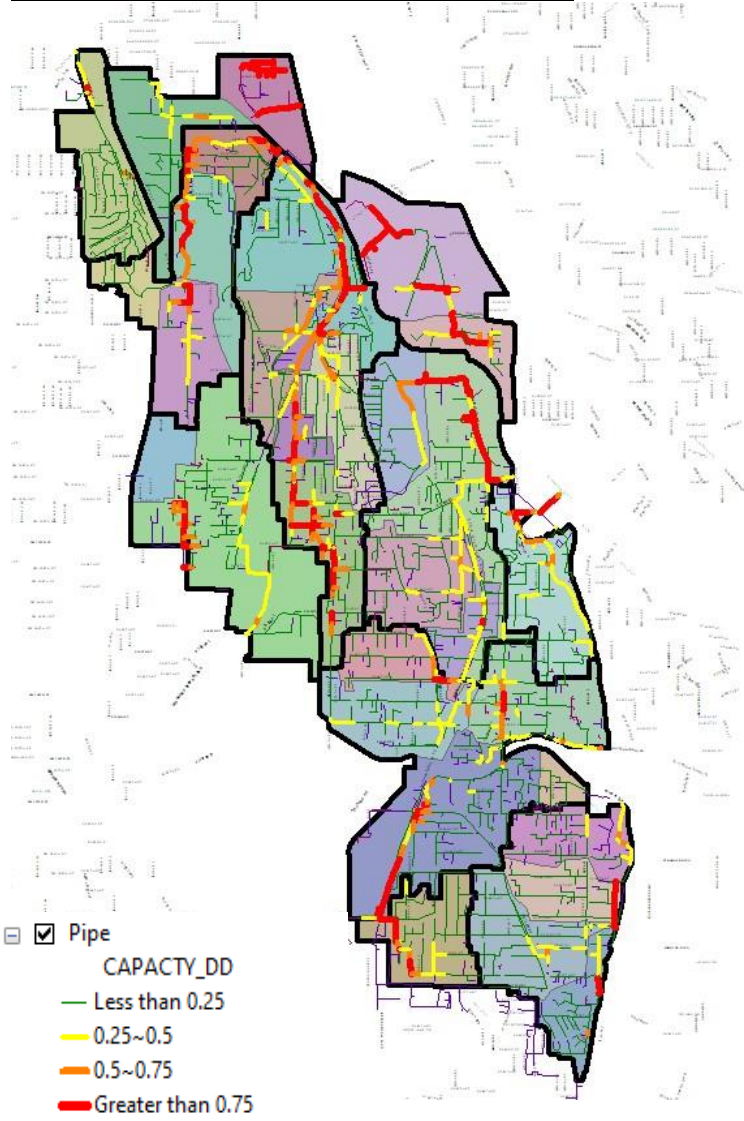


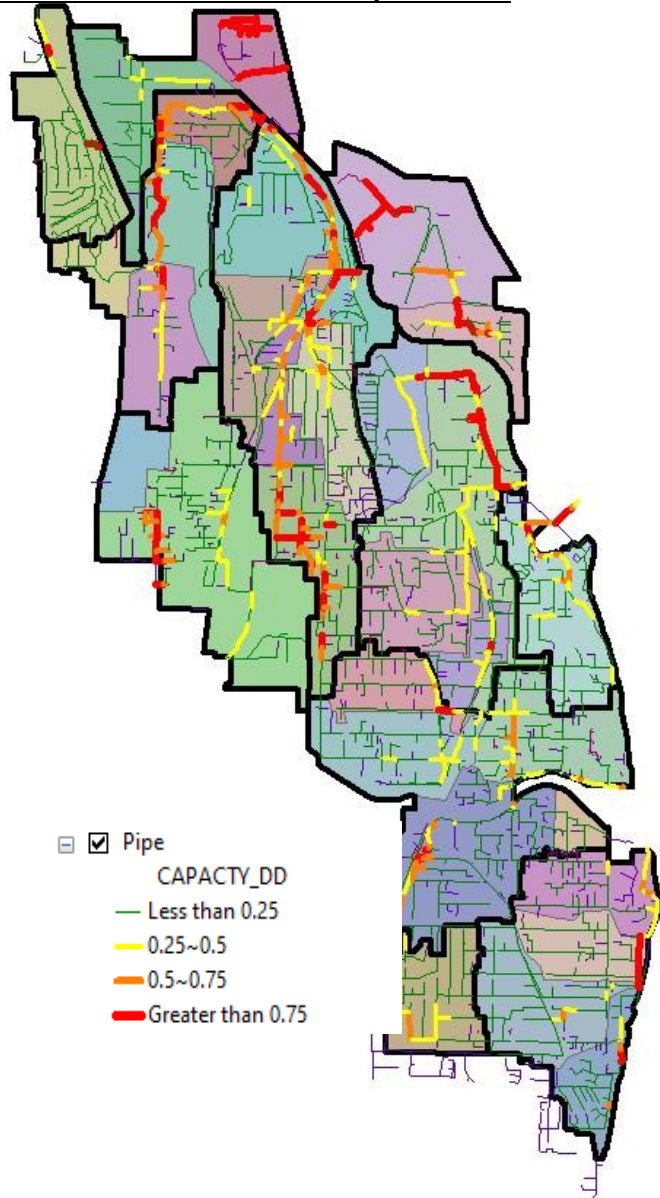
Table							
Pipe							
	FLOW_CLASS	DEPTH	HGL	VELOCITY	VOLUME	FROUDE_NUM	CAPACITY_DD
	0	0.049	335.558	1.095	10.168	1.052	0.031
	0	0.151	352.061	0.216	141.327	0.116	0.176
	0	0.304	350.126	2.436	26.535	0.886	0.458
	0	0.321	349.982	2.323	23.515	0.818	0.483
	0	0.048	352.051	0.949	27.333	0.923	0.033
	0	0.27	352.184	1.33	498.441	0.519	0.392
	0	0.158	361.971	2.336	79.943	1.233	0.181
	0	0.145	363.79	2.466	119.669	1.36	0.161
	0	0.179	365.048	1.777	113.952	0.877	0.216
	0	0.061	384.49	1.6	39.086	1.381	0.046
	0	0.167	366.076	1.89	85.036	0.967	0.196
	0	0.172	366.487	1.711	47.421	0.863	0.204
	0	0.168	367.189	1.647	65.859	0.839	0.199
	0	0.094	380.709	0.31	80.629	0.214	0.086
	0	0.076	386.637	1.271	51.717	0.983	0.064
	0	0.055	395.973	1.314	14.766	1.197	0.04
	0	0.035	397.076	0.836	10.338	0.959	0.02
	0	0.027	402.021	0.873	7.609	1.143	0.014
	0	0.121	371.603	2.275	24.313	1.382	0.124
	0	0.086	381.201	1.31	64.604	0.947	0.076
	0	0.11	373.138	2.588	55.363	1.648	0.11
	0	0.023	388.223	1.607	10.582	2.284	0.011
	0	0.143	373.72	1.411	79.446	0.785	0.159
	0	0.091	399.202	0.266	82.92	0.187	0.083
	0	0.136	375.202	1.195	120.267	0.683	0.148
	0	0.075	381.038	0.679	40.822	0.527	0.063
	0	0.095	376.717	1.181	45.542	0.816	0.088
	0	0.058	397.038	1.618	34.603	1.436	0.043
	0	0.113	363.681	1.284	76.455	0.809	0.112
	0	0.034	399.031	0.958	7.761	1.101	0.02
	0	0.033	399.965	0.832	8.367	0.977	0.019
	0	0.129	361.124	0.362	129.171	0.212	0.14
	0	0.166	362.644	0.766	42.642	0.393	0.195
	0	0.181	362.229	1.871	143.625	0.916	0.227
	0	0.179	361.333	2.033	220.693	1.001	0.223
	0	0.227	353.225	1.61	260.381	0.695	0.31
	1	0.825	18.595	0.004	311.906	0	1
	0	0.181	315.82	2.944	36.066	1.441	0.223
	0	0.103	320.336	3.082	42.821	2.033	0.1
	0	0.326	325.773	2.781	420.639	0.994	0.363
	0	0.286	324.789	3.325	405.634	1.281	0.303
	0	0.053	355.218	0.357	38.167	0.332	0.037
	0	0.165	330.206	1.389	105.068	0.71	0.247
	0	0.089	330.631	0.118	31.621	0.084	0.079
	0	0.138	330.91	1.531	54.298	0.863	0.192
	<Null>	<Null>	<Null>	<Null>	<Null>	<Null>	<Null>
	0	0.477	17.455	1.491	2501.745	0.393	0.773
	0	0.066	337.559	1.473	1.767	1.22	0.052

Peak 2030 InfoSWMM Model Analysis Results



FLOW	FLOW_CLASS	DEPTH	HGL	VELOCITY	VOLUME	FROUDE_NUM	CAPACTY_DD
5.912	0	0.049	335.558	1.095	10.168	1.052	0.031
5.678	0	0.151	352.061	0.215	141.745	0.116	0.176
165.444	0	0.303	350.124	2.429	26.343	0.886	0.454
170.736	0	0.319	349.981	2.321	23.312	0.82	0.479
4.76	0	0.048	352.051	0.949	27.341	0.923	0.033
76.019	0	0.268	352.181	1.31	492.556	0.514	0.387
64.158	0	0.155	361.969	2.312	78.337	1.23	0.177
60.016	0	0.143	363.786	2.439	116.758	1.358	0.157
57.974	0	0.176	365.045	1.759	111.042	0.876	0.21
10.426	0	0.058	384.487	1.552	36.623	1.371	0.043
55.96	0	0.164	366.073	1.869	82.823	0.966	0.191
52.812	0	0.169	366.484	1.695	46.22	0.863	0.199
49.349	0	0.165	367.186	1.628	64.208	0.837	0.194
4.195	0	0.093	380.709	0.317	78.694	0.221	0.084
11.66	0	0.073	386.635	1.25	49.28	0.983	0.061
6.998	0	0.053	395.971	1.218	13.977	1.135	0.037
2.334	0	0.033	397.074	0.816	9.534	0.961	0.019
1.846	0	0.026	402.021	0.928	7.138	1.242	0.013
42.697	0	0.119	371.601	2.255	23.695	1.383	0.121
14.353	0	0.084	381.199	1.257	61.922	0.923	0.073
42.264	0	0.108	373.136	2.562	54.009	1.647	0.107
2.664	0	0.023	388.223	1.607	10.582	2.284	0.011
33.118	0	0.14	373.717	1.394	77.065	0.784	0.155
3.772	0	0.09	399.203	0.301	81.016	0.214	0.082
26.196	0	0.133	375.2	1.183	116.911	0.683	0.144
6.187	0	0.073	381.037	0.659	39.619	0.517	0.061
15.833	0	0.093	376.717	1.194	44.667	0.83	0.086
11.052	0	0.058	397.039	1.67	34.682	1.479	0.043
21.372	0	0.11	363.678	1.263	73.695	0.806	0.108
3.346	0	0.036	399.032	1.031	8.166	1.165	0.021
2.792	0	0.035	399.968	0.88	9.203	1.001	0.021
7.594	0	0.127	361.124	0.368	126.86	0.217	0.138
22.239	0	0.165	362.642	0.737	42.182	0.38	0.193
63.273	0	0.181	362.228	1.865	143.481	0.913	0.226
68.311	0	0.179	361.334	2.038	220.889	1.003	0.224
74.842	0	0.227	353.225	1.61	260.386	0.695	0.31
-0.997	1	0.825	18.596	0.004	311.906	0	1
100.035	0	0.179	315.82	2.961	35.513	1.457	0.22
46.837	0	0.103	320.336	3.07	42.515	2.03	0.099
242.907	0	0.323	325.768	2.771	415.368	0.995	0.358
242.907	0	0.283	324.787	3.309	401.233	1.281	0.3
1.826	0	0.052	355.217	0.325	36.778	0.306	0.036
36.534	0	0.163	330.204	1.362	103.561	0.7	0.243
1.458	0	0.087	330.631	0.12	30.925	0.086	0.077
31.468	0	0.136	330.908	1.523	53.096	0.866	0.188
<Null>	<Null>	<Null>	<Null>	<Null>	<Null>	<Null>	<Null>
165.049	0	0.471	17.319	1.407	2466.274	0.375	0.764
11.688	0	0.066	337.558	1.464	1.739	1.219	0.051

Peak 2020 InfoSWMM Model Analysis Results



Pipe						
	HGL	VELOCITY	VOLUME	FROUDE_NUM	CAPACITY_DD	
▶	335.553	1	8.76	1.012	0.027	
	352.061	0.219	139.123	0.119	0.173	
	350.12	2.431	25.661	0.898	0.443	
	349.973	2.311	22.257	0.835	0.457	
	352.026	0.662	8.612	0.957	0.01	
	352.179	1.306	484.72	0.516	0.381	
	361.969	2.326	77.492	1.243	0.175	
	363.787	2.445	116.911	1.36	0.157	
	365.045	1.757	111.261	0.875	0.211	
	384.487	1.552	36.199	1.377	0.042	
	366.073	1.87	82.886	0.966	0.191	
	366.484	1.696	46.258	0.863	0.199	
	367.187	1.628	64.263	0.838	0.194	
	380.709	0.308	78.618	0.215	0.084	
	386.636	1.266	51.124	0.983	0.063	
	395.972	1.265	14.519	1.161	0.039	
	397.08	0.942	11.041	1.057	0.022	
	402.02	0.828	7.227	1.106	0.013	
	371.602	2.262	23.73	1.386	0.121	
	381.199	1.255	60.335	0.93	0.071	
	373.136	2.565	54.183	1.647	0.108	
	388.223	1.607	10.582	2.284	0.011	
	373.718	1.404	78.356	0.785	0.157	
	399.205	0.371	83.053	0.26	0.084	
	375.198	1.138	116.819	0.658	0.144	
	381.039	0.73	39.164	0.574	0.061	
	376.715	1.164	43.202	0.819	0.083	
	397.038	1.642	33.284	1.477	0.041	
	363.676	1.248	71.694	0.805	0.105	
	399.032	1.027	7.884	1.173	0.02	
	399.967	0.864	8.93	0.993	0.02	
	361.121	0.326	124.126	0.195	0.134	
	362.64	0.733	40.863	0.382	0.186	
	362.223	1.839	138.745	0.912	0.219	
	361.331	2.007	213.896	1	0.217	
	353.22	1.59	252.478	0.695	0.301	
	18.588	0.006	311.906	0	1	
	315.793	2.151	27.725	1.171	0.169	
	320.265	0.47	18.165	0.433	0.039	
	325.746	2.712	389.556	1.002	0.335	
	324.779	3.26	373.318	1.301	0.279	
	355.217	0.346	34.317	0.332	0.034	
	330.201	1.357	99.66	0.708	0.234	
	330.631	0.123	30.09	0.089	0.076	
	330.905	1.497	51.409	0.862	0.182	
	<Null>	<Null>	<Null>	<Null>	<Null>	<F
	17.119	1.26	2330.136	0.358	0.703	
	337.553	1.32	1.591	1.132	0.047	

